



e-PCM

Wind Turbine and Generator Condition Monitoring

Plant Condition Monitor for Generators

e-PCM

The Artesis e-PCM is an AI based online condition monitoring system for wind turbine and generators. e-PCM uses patented technology to offer a unique solution that safeguards generators from electrical and mechanical faults.

e-PCM continuously identifies existing and developing faults on generators and their prime movers, effectively using the generator itself a sophisticated transducer. e-PCM utilizes an intelligent, model-based approach to provide anomaly detection by measuring the current and voltage signals from the electrical supply from the generator. It is permanently mounted, generally in the generator control center and is applicable to 3- phase AC generators. Accompanying Artesis Enterprise Server Software and IoT Portal are used to view the data.



Applications

e-PCM is applicable to wide range of equipment, including wind turbines, turbo alternators, diesel generators and hydro generators, and is particularly valuable for equipment in inaccessible or hazardous environments.

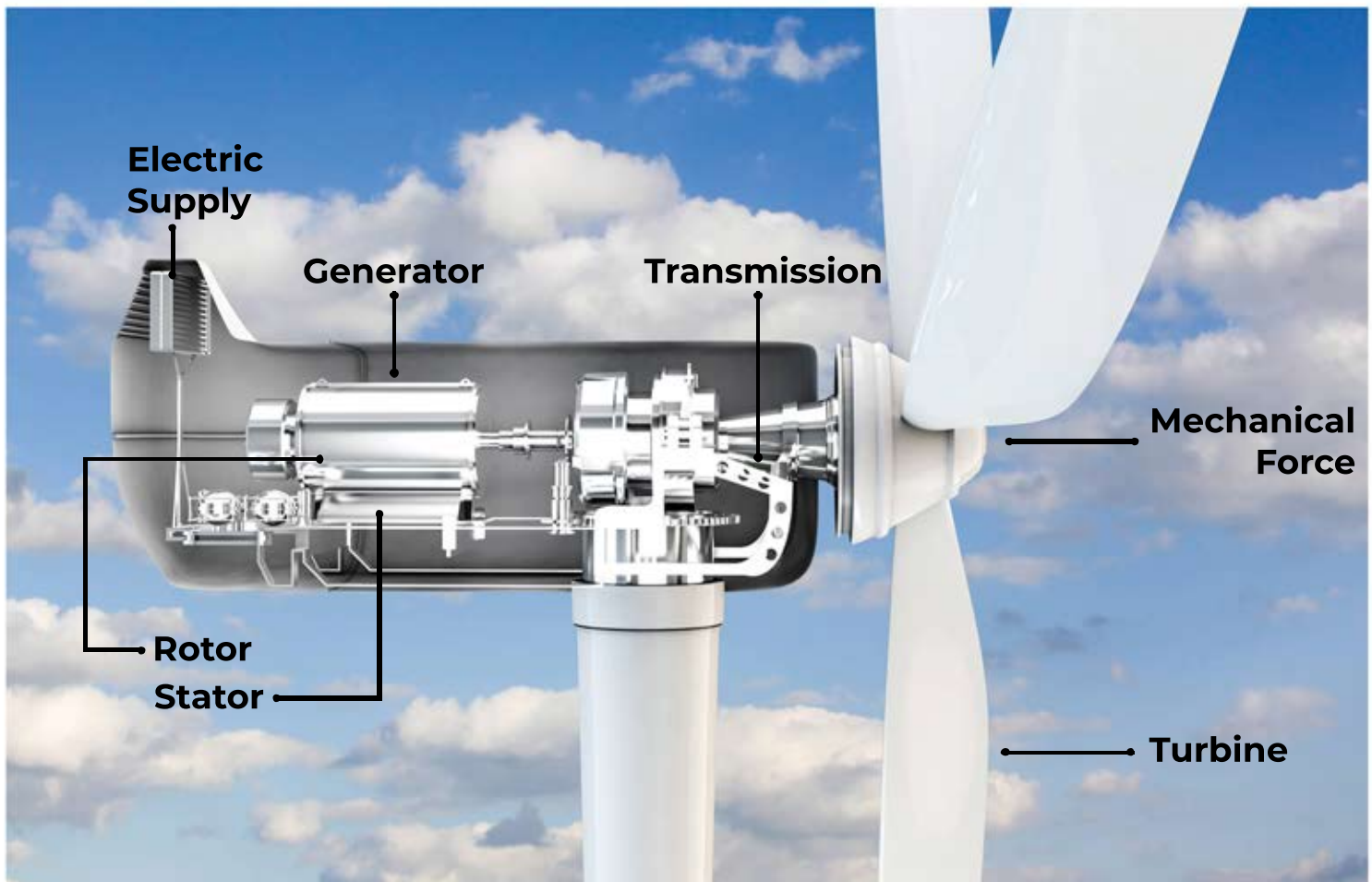
e-PCM can be used across many industries including the chemical and petrochemical, metal processing, power generation, pulp and paper, water, utilities, cement, food and beverage, automotive, textile, and maritime sectors.



Working Principle

e-PCM creates a digital twin of generators and their prime movers such as wind turbines. The digital twin is built up during self-learning phase of operation. During this phase the three voltages and three currents are continuously measured and processed using system identification algorithms which determine the model parameters under a full range of operating states.

When a fault starts to develop in either the generator or the prime mover, this has an effect on the current waveform, making the real system behave differently from the model system. This allows e-PCM to use the generator as a sensor that can detect faults in both the generator and the prime mover. e-PCM continuously compares model parameters with those held in the reference model.



Continuous Monitoring for Your Generators

e-PCM monitors the following parameters continuously:

✂ Mechanical Faults:

- Loose Foundation,
- Loose Components,
- Unbalance,
- Misalignment,
- Coupling,
- Bearing,
- Transmission Element,
- Rotor faults

⚙ Electrical Faults:

- Loose Windings,
- Stator,
- Short Circuit,
- Internal Electrical,
- External Electrical,

⚡ Electrical parameters:

- Power factor
- Active power
- Reactive power
- Vrms (3 phase)
- Irms (3 phase)
- V Imbalance
- I Imbalance
- Frequency
- Total Harmonic distortion
- 3rd Harmonic
- 5th Harmonic
- 7th Harmonic
- 9th Harmonic
- 11th Harmonic
- 13th Harmonic



Continuous Monitoring for Wind Turbines

e-PCM monitors the following parameters continuously:

Turbine blades

- Misalignment
- Mechanical damages

Gear box

- Wear, crack in gears
- Looseness
- Eccentricity

Generator bearings

- Ring and ball damage
- Crack
- Corrosion
- Lubrication problems

Alternator

- Unbalance
- Axial misalignment
- Cracks in the rotor bars
- Short circuit and insulation problems in wound rotors
- Rotor eccentricity
- Short circuit, insulation weakening and looseness in stator windings
- Heating problems at motor terminal connection points
- Current unbalance and voltage unbalance
- Cable damages and connection faults

Energy production information

- Instant active power (kW)
- Instantaneous reactive power (kVAr)
- Total active power (kWh)
- Total reactive power (kVArh)

Working hours information

- Total working hours
- Last working hour
- Previous working hour

Energy statistics on equipment or group basis in monthly and daily periods

- Active power demand graph
- Day and month summary

Harmonic Analysis

- THD
- Odd harmonics - 3,5,7,9,11,13

Frequency

Current and voltage imbalances

Power factor

3 phase current and voltage rms values

Key Features

e-PCM simplifies condition monitoring while increasing maintenance efficiency.

- Easy installation from a single point with alternator current and voltage information without sensors.
- Maintenance planning information including diagnostic and time to failure
- Easy to use and no need for interpretation by a highly trained person
- Detects and diagnoses existing and developing faults
- Verifies effectiveness of the maintenance action taken
- Unlimited trend recording* (*According to database size)
- PSD -Power Spectral Density- Curve recording for advance analysis
- E-Mail tool for diagnostic alerts
- Sending data to the host without the need for static IP
- User authorization on the basis of facility or equipment
- Electrical parameter values can be transferred to other systems with Modbus TCP.
- With OPC DA 2.0, both electrical parameters and diagnostic parameters can be transferred to other systems.



Alarm Types and Diagnostics

e-PCM constantly takes measurements and compares them with its reference condition, in order to assess the severity and type of any developing fault. It is able to recognise abnormalities in a wide range of operating states, and is even able to extend its self-learning process when it recognises that it has moved beyond its original learning limits. This allows e-PCM to achieve very sensitive detection of faults without false alarms.

- Normal
- Watch Line
- Watch Load
- Examine 1
- Examine 2

Green: Normal operation

Yellow: The situation is developing outside of normal working conditions.

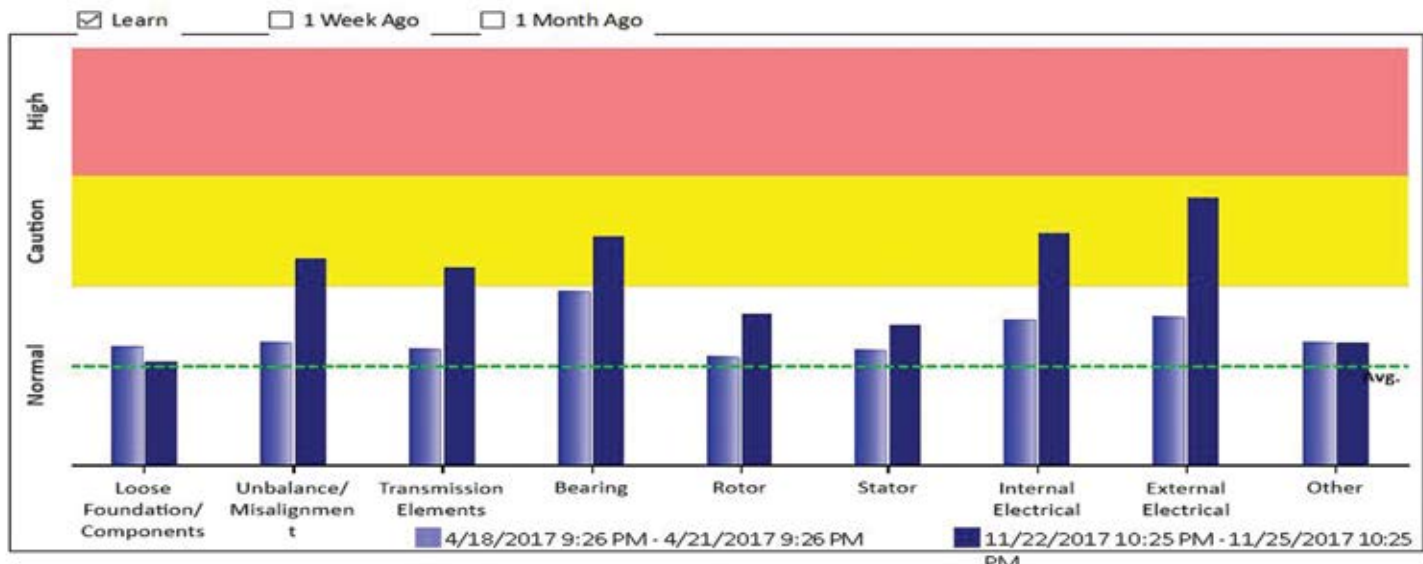
Red: There is a developing fault

EQUIPMENT STATUS REPORT



| | | | |
|-----------------------|-------------|------------------------------|----------|
| Device Name | MPT-PM-418A | Nominal Voltage (L-N) | 3810 V |
| Equipment Type | Pump | Nominal Current | 385 A |
| Frequency | 50 Hz | Motor Speed | 1494 rpm |

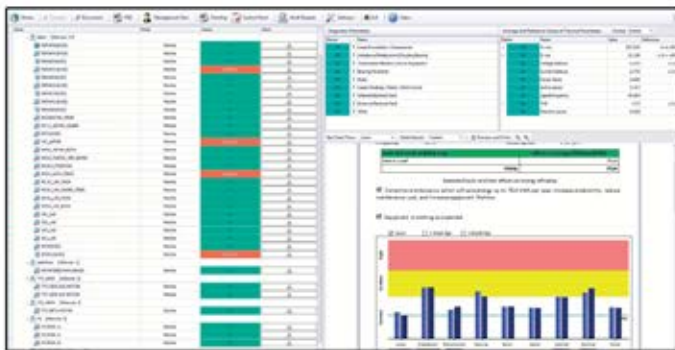
Equipment is working as expected.



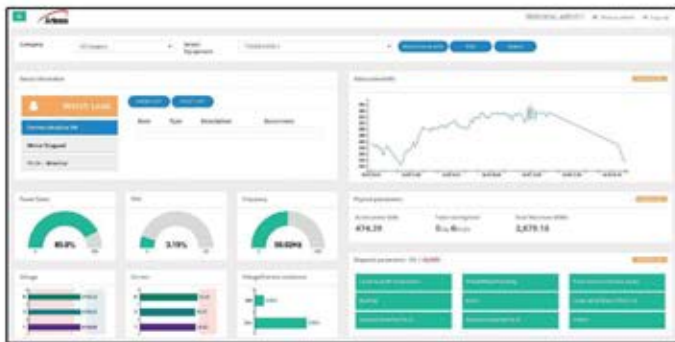
Monitoring Software

E-PCM supports various remote monitoring options.

- Artesis Enterprise Software
- Artesis IoT Software
- 3rd party Software integration*



Artesis Enterprise Software



Artesis IoT Software

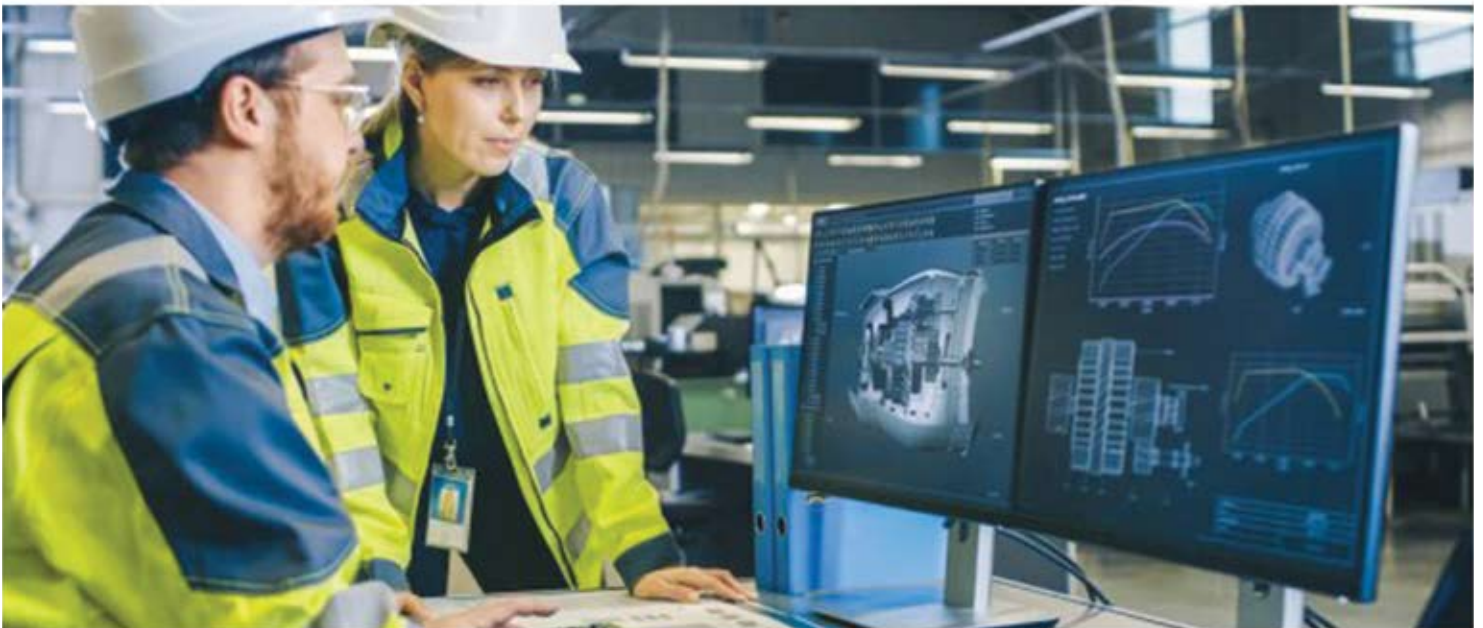
*Both electrical parameters and diagnostic parameters can be transferred to other systems via Modbus TCP or OPC DA 2.0

Electrical Faults

| Fault type | Causes | Effects |
|-------------------------------------|---------------------------------------------------|---------------------------------------------------|
| Voltage or current imbalance | Failing windings or capacitors, loose connections | Mechanical damage, reduced efficiency, breakdowns |
| Insulation breakdown | Thermal effects, contamination, moisture, wear | Shorts, major damage, reinsulation |
| Rotor and stator damage | Excessive movement, bad rewind | Loss of power, severe damage, |

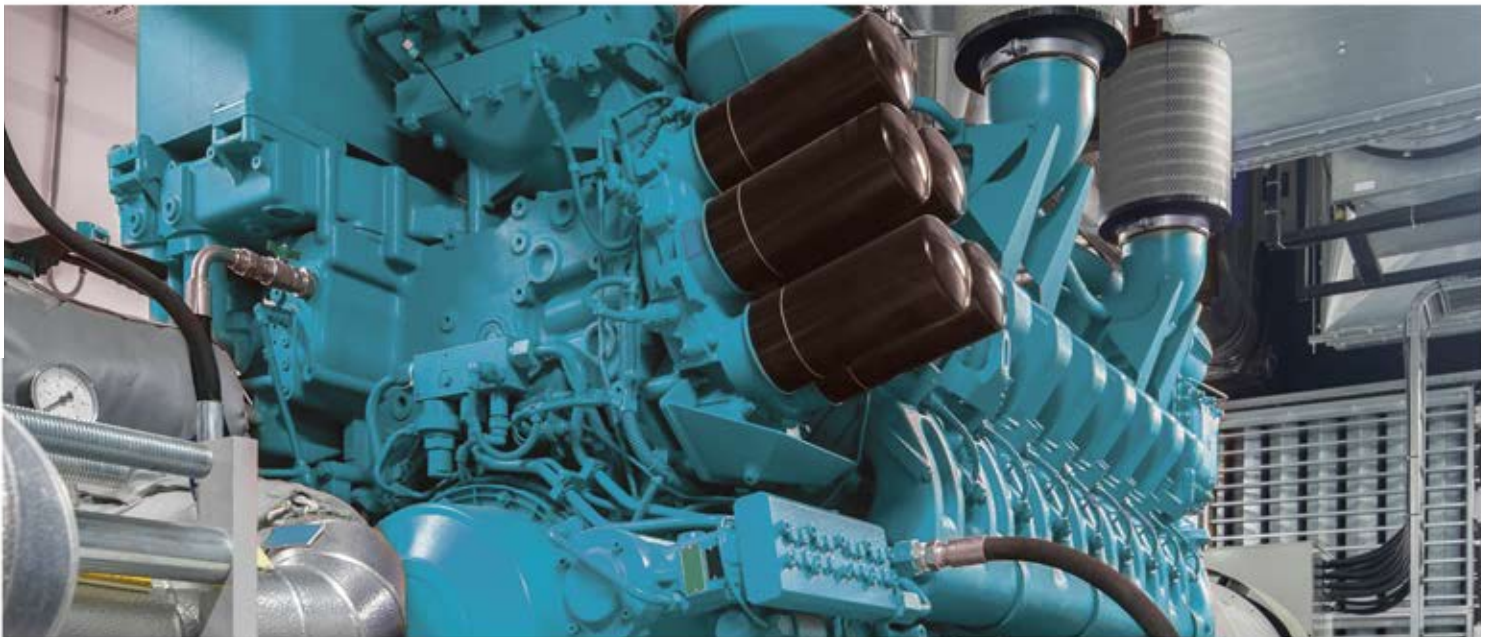
Mechanical Faults

| Fault type | Causes | Effects |
|-----------------------------------------------------------------|----------------------------------------------------------------------|-----------------------------------------------|
| Foundation or component looseness | Bad design, installation, deterioration | Distortion leads to bearing and seal failures |
| Unbalance, misalignment | Bad installation or maintenance, fouling | Mechanical damage, efficiency loss |
| Bearings and transmission problems including loose belts | Bad installation, bad lubrication, wear | Progressive damage, secondary damage |
| Rotor damage | Physical damage, corrosion, windings get grounded or short circuited | Loss of process efficiency, power consumption |



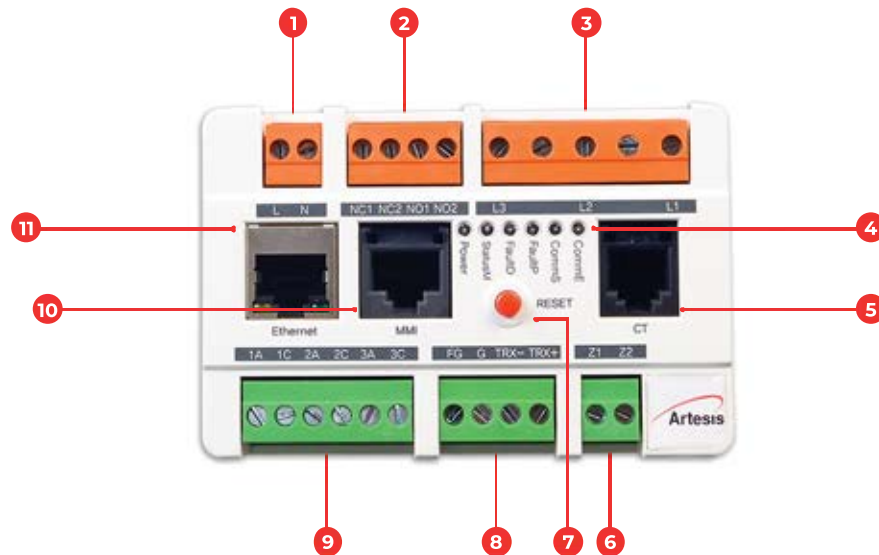
Operational Faults

| Fault type | Causes | Effects |
|--------------------------------|----------------------------------------------------------------------------------------------------------------------------------------------------------------------------------------------------------------------------------------------------------------------------------------------|--------------------------------------------------------------------------------------------|
| Winding heat up | Overloading causes the flow of high currents which causes the stator heat up. | |
| Lubrication problems | Greasing schedules, bad lubrication system, oil ageing | Loss of efficiency, progressive damage to bearings, trans |
| Reverse power | This occurs due to failure of the prime mover and insufficient torque supplied to the generator. | |
| Underexcitation | Underexcitation occurs when the excitation to the generator is cut off and the Power factor goes to the leading side. | This can lead to the failure of the diodes on the rotor and pole slipping. |
| Negative Phase Sequence | Alternator is loaded in an unbalanced manner. That is, the current on the three phases are not balanced. | Heating of the Alternator rotor. |
| Overvoltage | Failure of the excitation control system. If the excitation input to the alternator does not match the voltage. | Voltage rising above normal levels and the risk of the winding insulation getting damaged. |
| Overspeeding | Speed controller regulating the speed of the prime mover fails. When the speed of the alternator rises above the nominal speed, the centrifugal forces developed within the Alternator are so enormous that the poles of a salient pole rotor can get damaged and can come out of the rotor. | Hit the stator and the alternator will be severely damaged. |



Motor Condition Monitoring System

| No | Name | Function |
|----|-------------------------|------------------------------------------------------------|
| 1 | Supply voltage terminal | Terminal for operational power (AC 100- 240V, DC 120-370V) |
| 2 | Relay output terminal | Alarm triggering |
| 3 | Motor voltage input | Terminal for motor input voltage (Max 690V) |
| 4 | Status LED | Indicates Power status, Module status, etc. |
| 5 | CT connection port | Terminal for 3 phase CT connection (RJ12) (Max 100mA) |
| 6 | ZCT connection port | Terminal for ground CT connection |
| 7 | Reset button | Trip Relay Reset Button |
| 8 | RS-485 terminal | Terminal for RS-485 communication |
| 9 | Empty terminal | No function |
| 10 | HMI terminal | Terminal for connecting with HMI (RJ45) |
| 11 | Ethernet port | Terminal for ethernet communication (RJ45) |



- Predictive diagnosis of electrical and mechanical faults (3-phase AC motor) Energy meter function
- Power monitoring
- Touch screen display monitor (4.3 "TFT LCD monitor)

- RS485 serial communication and Ethernet communication support
- EN 60255-26: 2013, EN 61010-1:2010, EN61326-1: 2006
- Compact size (94 mm x 64 mm x 110 mm)
- DIN rail mount available

e-PCM Datasheet

Rated Specifications

General Information

Genetator Type 3-phase generators

Ambient Conditions

Operating Temperature -10° to 50 °C
Humidity %80, Relative Humidity, non-condensing
Pollution Degree 2
Altitude 2000m (6562ft)
IP Rating IP40

Input Supply Voltage

Rated Voltage 100-240 Vac 120-370 DC
Allowable Input Voltage 90% - 110% (of rated voltage)
Frequency 50/60Hz
Power Consumption 5W
Over Voltage Category IEC61010 Cat III

Measurement Voltage Inputs max 690Vac (Line to Line)

Measurement Current Inputs Up to 2500A with three Cat III Current Transformers: 0.5% accuracy

Frequency Range 20-120 Hz

Communication

Network RS485 - Modbus-RTU | TCP/IP - Modbus-TCP

Display

4.3" LED Displays electrical measurement, failure information, and setting values
Status LEDs Displays power status, module status, comm status, alarm for diagnosis
Dimensions WxHxL 120 mm x 105 mm x 15 mm

Physical

Weight 450 g (1 lb)
Dimensions WxHxL 94 mm x 64 mm x 110 mm
Mounting Front Panel Mounting (indoor)

Compliance & Certifications

EMC EMC Directive 2004/108/EC, EN61326-1, IEC61326-1
Safety Electrical Safety Directive 2006/95/EC, EN61010-1, IEC61010-1

Measurement Functions

| | |
|----------------|--------------------------------------------|
| Voltage | 3 phase voltage (line-line), unbalance [%] |
| Current | 3 phase current, unbalance [%], THD [%] |
| Active Power | Measuring active power [kW] |
| Reactive Power | Measuring reactive power [kVAr] |
| Frequency | Measuring Frequency [Hz] |
| Power factor | Measuring Power factor |
| Energy | Total Whr, Today Whr, Prev day Whr |
| Data and Time | Year, month, day, hour, minute, second |

Auxiliary Functions

| | |
|----------------------------------|---------------------------------------------------------------------------------|
| Password | Password Secure configuration |
| Communication | Serial/ethernet communication for monitoring status and event history |
| Total Running-Hour | Record of total running from installation which cannot be modified or cleared |
| Alarm | Output alarm signal to 3 output relays |
| Fault History | 30(diagnosis) fault history to the flash memory |
| Limitation Of Auto Reset Attempt | Block auto-reset if the reset count exceeds the pre-set count within 30 minutes |
| Date/Time Information Setting | Save date/time to provide exact time of motor failure |

Motor Condition Monitor and Diagnostic Functions

Status

| | |
|------------|--------------------------------------------------------------------------------------------------------------------------------------------------------------------------------------------------------------------------------------------------------------------------------------------------------------------------------------------------------------------------------------------------------------------------------------------------------------------------------------------------------------------------------------------------------------------------------------------------------------------------------------------------------------------------------------------------------------------------------------------------------------------------------------------------------------------------------------------------------------------------------------------------------------------------------------|
| OK | Motor and driven system is working as expected. |
| Watch Line | <p>Watch Line is usually temporary in nature and generally the user does not need to take any action. However, it is recommended that when this status level occurs, the user should at least assess the extent of the change in the line conditions, as significant changes in the line voltages and currents may be dangerous to the motor. If the line status change is persistent, the user should assess the root cause of this change.</p> <p>For instance, it may be due to a problem in the contactors or for inverter driven motors the settings of the inverter may have been changed. In any case, if the root cause cannot be remedied easily and quickly and the new voltage supply condition presents no danger to the motor, the user has the option to send e-PCM to the UPDATE mode. This will allow e-PCM to learn the new voltage supply conditions, after which the status will eventually return to normal.</p> |
| Watch Load | <p>If the process load has not been altered deliberately, check for leakage, valve & vane adjustment, pressure gauge faults, manometer, dirty filters (fans, compressors).</p> <p>If the process is altered deliberately, device should be updated.</p> |
| Examine 1 | Plan Maintenance (First Level Alarm): There are developing mechanical and/or electrical fault(s). |
| Examine 2 | Do Maintenance (Second Level Alarm): There are developing mechanical and/or electrical fault(s). |

Accessory-Split Core Current Transformers

| | | |
|---------------------------|--------|----------------------------------------------------------|
| AC25R-10-100mA -E | 3x10A | Splitcore current transformers set, (Ø25mm) 10A:100mA |
| AC25R-20-100mA -E | 3x20A | Splitcore current transformers set, (Ø25mm) 20A:100mA |
| AC25R-30-100mA -E | 3x30A | Splitcore current transformers set, (Ø25mm) 30A:100mA |
| AC25R-30-100mA -E | 3x60A | Splitcore current transformers set, (Ø25mm) 60A:100mA |
| AC25R-100-100mA -E | 3x100A | Splitcore current transformers set, (Ø25mm) 100A:100mA |
| AC25R-200-100mA -E | 3x200A | Splitcore current transformers set, (Ø25mm) 200A:100mA |



| | | |
|---------------------------|--------|----------------------------------------------------------|
| AC35R-300-100mA -E | 3x300A | Splitcore current transformers set, (Ø35mm) 300A:100mA |
|---------------------------|--------|----------------------------------------------------------|



| | | |
|---------------------------|--------|----------------------------------------------------------|
| AC51R-400-100mA -E | 3x400A | Splitcore current transformers set, (Ø51mm) 400A:100mA |
| AC51R-600-100mA -E | 3x600A | Splitcore current transformers set, (Ø51mm) 600A:100mA |
| AC51R-800-100mA -E | 3x800A | Splitcore current transformers set, (Ø51mm) 800A:100mA |



| | | |
|----------------------------|---------|-----------------------------------------------------------|
| AC80R-1000-100mA -E | 3x1000A | Splitcore current transformers set, (Ø80mm) 1000A:100mA |
| AC80R-1500-100mA -E | 3x1500A | Splitcore current transformers set, (Ø80mm) 1500A:100mA |



| | | |
|-----------------------------|---------|------------------------------------------------------------|
| AC105R-1200-100mA -E | 3x1200A | Splitcore current transformers set, (Ø105mm) 1200A:100mA |
| AC105R-2000-100mA -E | 3x2000A | Splitcore current transformers set, (Ø105mm) 2000A:100mA |





EXCLUSIVE DISTRIBUTOR FOR INDIA

Address : R-375 TTC Industrial Area, Rabale, Navi Mumbai - 400 701
Contact : 022 - 2173 7777 / 022 - 4924 7777
Email : sales@rokadegroup.com
www.rokadegroup.com

MUMBAI | PUNE | THANE | CHENNAI | DELHI | KOLKATA



Headquarter

Kemal Nehrozoğlu Cad. GOSB Teknoparkı
Hightech Binası No:B10, 41480
Gebze/Kocaeli, TURKEY

+90-262-678-8860

+90-262-678-8855

enquiry@artesis.com

US Office

58 Thomas St, #4 New York,
NY 10013, USA

+1 (201) 793-7150

usa@artesis.com

www.artesis.com



@artesisglobal

